

AUTOMATED ELECTROPHORESIS Experion™ Software

- Automatic calculations of size, concentration, and percent of total sample for each peak or fragment
- Ability to calculate relevant statistics such as mean, standard deviation, and %CV for measuring reproducibility
- Accessible self-training tools: Software help function includes Getting Started video and relevant technical bulletins

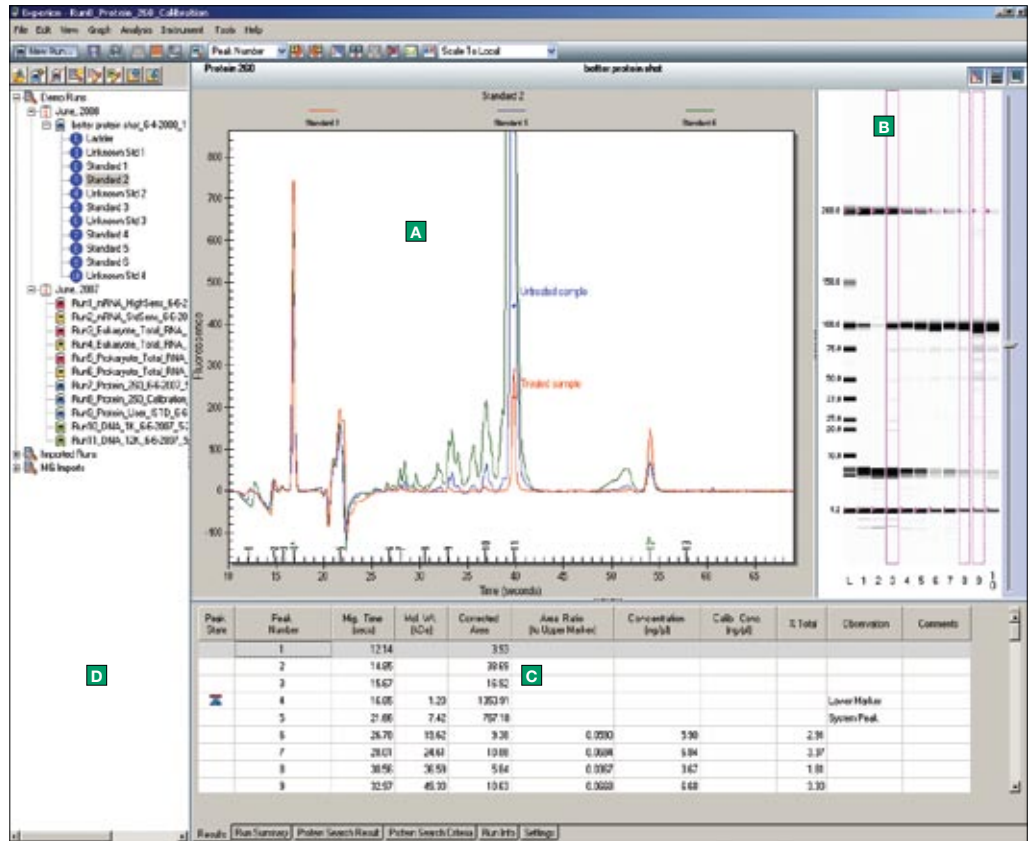


Fig. 1. Experion software provides easy access to the system and results with elements such as: A, electropherogram view, capable of overlaying multiple sample electropherograms; B, gel view; C, results table; D, tree-view browser.

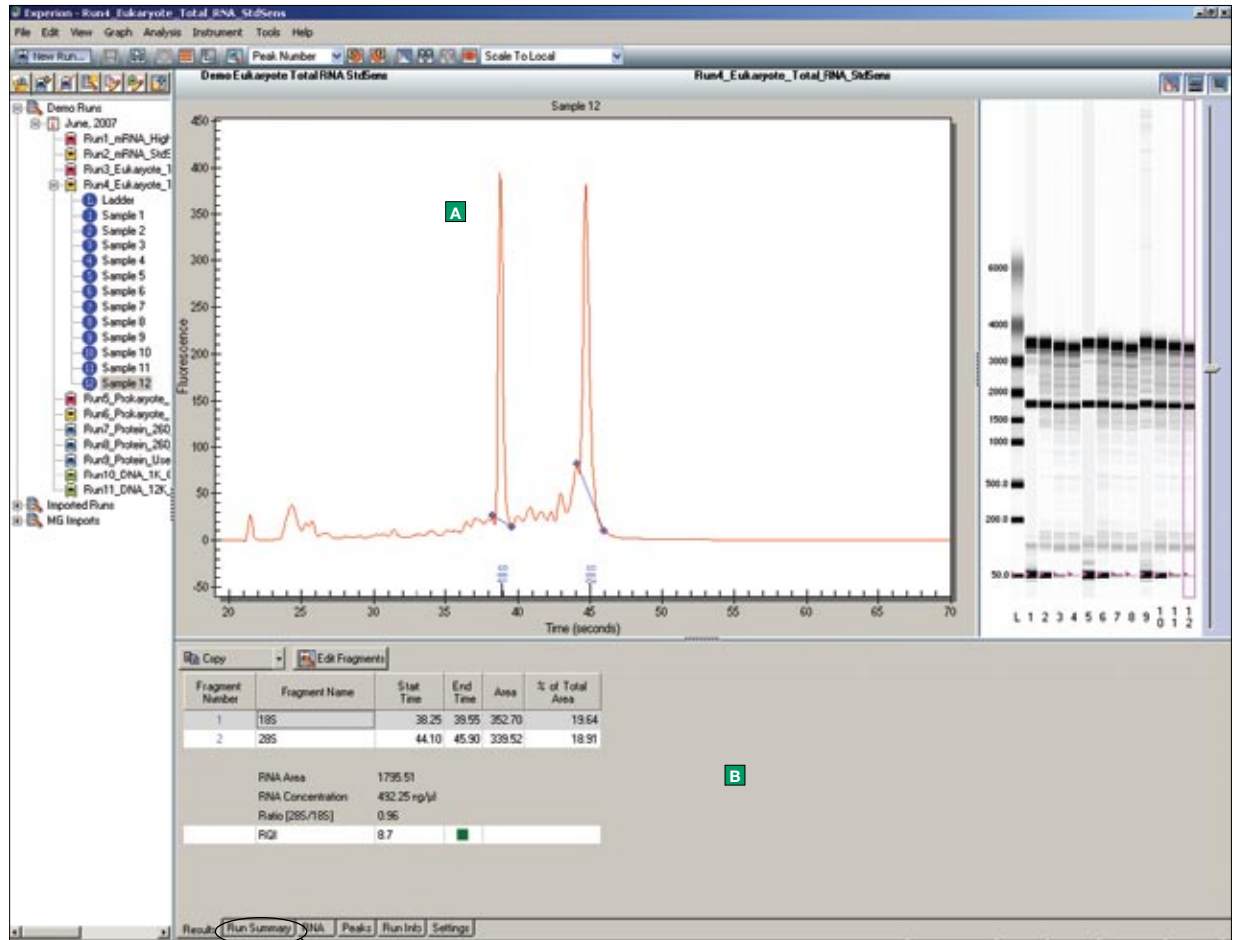
Intuitive Access to Information

The Experion automated electrophoresis system delivers fast, high-resolution results for protein, RNA, and DNA separations. Experion software optimizes these processes by providing easy access to the setup, running, and data analysis functions of the system.

- Graphical interface is user friendly (Figure 1)
- Run files are easy to find; chronological storage, sorting, and retrieval of run data with the logical, flexible, tree-view browser
- Electropherograms can be tagged and labeled using mouse (right click)
- Reports can be customized
- Results can be exported in many formats: spreadsheets, text, and XML
- Compatible with Windows Vista operating system to grow with your organizational needs



Experience Meets Innovation



Well ID	Sample Name	RNA Area	RNA Concentration (ng/μl)	Ratio [28S/18S]	RQI	RQI Classification	RQI Alert
L	Ladder	583.61	160.00				
1	Sample 1	14.85	4.07	0.91	N/A		Critical Anomaly
2	Sample 2	90.52	24.82	1.48	9.8	■	
3	Sample 3	998.72	273.80	1.04	9.3	■	
4	Sample 4	2119.76	581.14	0.99	8.9	■	
5	Sample 5	13.30	3.65	1.24	N/A		RNA conc. too low
6	Sample 6	97.98	26.86	1.51	9.5	■	
7	Sample 7	874.40	239.72	1.03	9.3	■	
8	Sample 8	2049.90	561.99	1.00	9.0	■	

At the bottom, a navigation bar includes 'Results', 'Run Summary', 'RNA', 'Peaks', 'Run Info', and 'Settings'. A green box 'C' is positioned near the 'Well ID' column header.

Fig. 2. Expiration software provides easy access to RNA results with elements such as: A, RNA sample profile for visualizing rRNA fragments; B, results table showing RQI value along with convenient color-coded ranking, 28S/18S ratio and RNA concentration; C, a run summary table that shows results from all wells simultaneously for easy sample-to-sample comparisons.

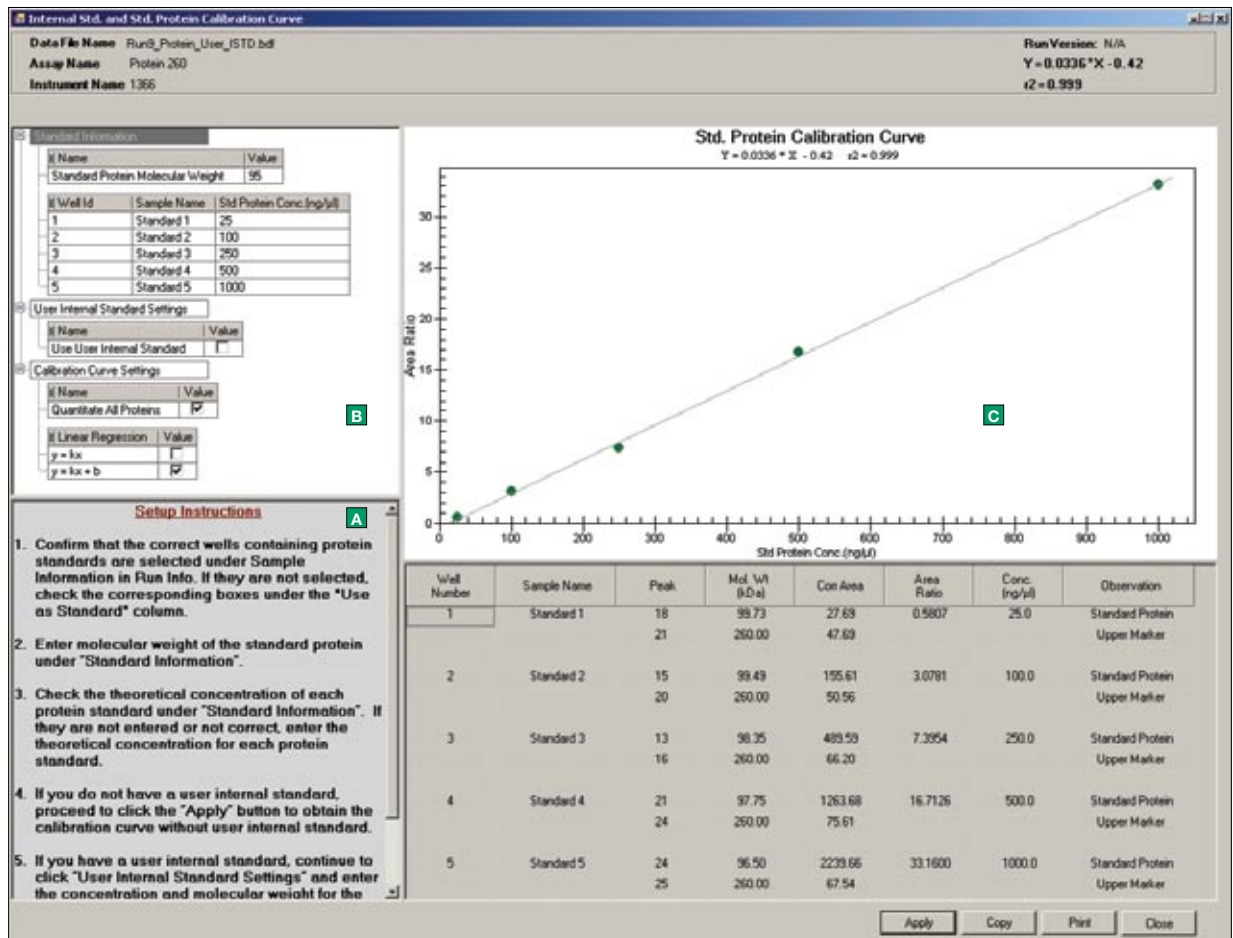


Fig. 3. Experion software provides easy access to protein analysis with comprehensive and flexible tools for quantitation. **A**, easy protein quantitation setup instructions to ensure accurate results. **B**, options for the stringency of protein quantitation desired. Options include the choice of introducing a user-defined internal standard instead of using the built-in internal default standard or selecting an appropriate linear regression for use with calibration curve setup. **C**, calibration curve and measure of linearity (r^2 value) generated for selected points as well as molecular weight and determined concentration in the adjacent table.

Automated RNA Analysis

RNA sample quality and concentration typically are assessed before real-time quantitative PCR and microarray experiments are performed. Experion software displays RNA profiles of samples and automatically calculates the following information in a clear and easy-to-use format:

- RNA samples are standardized with a ranking from 1 to 10 using the RNA Quality Indicator (RQI) (Figure 2)
- Color-coding easily classifies quality of RNA
- Ribosomal RNA peak area and 28S/18S ratio determination
- Concentration of total RNA and mRNA
- Statistical analysis of RNA fragments of interest across the chip

Automated Protein Analysis

A quick, reproducible, and convenient method is required to check protein quantitation and purity during and after chromatographic separation. Experion software provides a comprehensive and flexible solution for protein quantitation.

- Protein profiles allow easy visualization of purity (Figure 1)
- Protein profiles can be overlaid for easy visualization of differences between samples
- Calculate relative concentration against a built-in internal standard, or introduce your own internal standard for higher levels of accuracy
- Calculate absolute concentration against a built-in internal standard, or introduce your own internal standard for higher levels of accuracy (Figure 3)
- Use linear regression options to generate standard curves ($y = kx + b$ or $y = kx$)

- Refine automatically called peaks with manual peak integration
- Compare a single protein across samples, and provide statistical analysis (mean, standard deviation, and %CV) to confirm reproducibility

Automated DNA Analysis

For analysis of restriction digests, amplified DNA, microsatellites, or amplified fragment length polymorphisms (AFLPs), Experion software enables concentration and size determination with high sensitivity and excellent resolution (down to 5 bp) over a size range of 100 bp to 12,000 bp.

Ability to Grow With Your Organization

Experion software is guaranteed to be compatible with the Microsoft Windows Vista operating system for smooth transitions during growth and expansion. This flexibility, in combination with Experion Security Edition software, enables 21 CFR Part 11 compliance if such is needed in your workflow.

Recommended System Requirements

Windows XP (Service Pack 3) or Vista (Service Pack 1) operating system
 Pentium 4, 3 GHz processor
 1 GB RAM
 1,280 x 1,024 screen resolution with true-color mode (24 or 32 bits)
 80 GB hard drive
 CD-ROM drive
 USB port, version 2.0

Ordering Information

Catalog #	Description
700-7050	Experion Software, system operation and data analysis tools, PC
700-7051	Experion Validation Kit, 3 test chips, qualification procedures, dongle, PC
700-7052	Experion Security Edition Software, standard and 21 CFR 11 data analysis tools, 3 test chips, qualification procedures, dongle, PC



LabChip and the LabChip logo are trademarks of Caliper Life Sciences, Inc. Bio-Rad Laboratories, Inc. is licensed by Caliper Life Sciences, Inc. to sell products using the LabChip technology for research use only. These products are licensed under US patents 5,863,753, 5,658,751, 5,436,134, and 5,582,977, and pending patent applications, and related foreign patents, for internal research and development use only in detecting, quantitating, and sizing macromolecules, in combination with microfluidics, where internal research and development use expressly excludes the use of this product for providing medical, diagnostic, or any other testing, analysis, or screening services, or providing clinical information or clinical analysis, in any event in return for compensation by an unrelated party.

Pentium is a trademark of Intel Corporation. Windows Vista and Windows XP are trademarks of Microsoft Corporation.



**Bio-Rad
Laboratories, Inc.**

Life Science
Group

Web site www.bio-rad.com **USA** 800 4BIORAD **Australia** 61 02 9914 2800 **Austria** 01 877 89 01 **Belgium** 09 385 55 11 **Brazil** 55 21 3237 9400
Canada 905 364 3435 **China** 86 21 6426 0808 **Czech Republic** 420 241 430 532 **Denmark** 44 52 10 00 **Finland** 09 804 22 00 **France** 01 47 95 69 65
Germany 089 318 84 0 **Greece** 30 210 777 4396 **Hong Kong** 852 2789 3300 **Hungary** 36 1 455 8800 **India** 91 124 4029300 **Israel** 03 963 6050
Italy 39 02 216091 **Japan** 03 6361 7000 **Korea** 82 2 3473 4460 **Mexico** 52 555 488 7670 **The Netherlands** 0318 540666 **New Zealand** 0508 805 500
Norway 23 38 41 30 **Poland** 48 22 331 99 99 **Portugal** 351 21 472 7700 **Russia** 7 495 721 14 04 **Singapore** 65 6415 3188 **South Africa** 27 861 246 723
Spain 34 91 590 5200 **Sweden** 08 555 12700 **Switzerland** 061 717 95 55 **Taiwan** 886 2 2578 7189 **United Kingdom** 020 8328 2000